



Transport
Canada

Transports
Canada

Navigation Protection Program (NPP)
100 South Front Street, 1st Floor
Sarnia, ON N7T 2M4

NPP File No.: 2018-401009

June 2, 2025

Public Services and Procurement Canada
11 Laurier Street, Portage III, Place du Portage
Gatineau, QC K1A 0S5

Attention: Craig Legare

RE: Approval under the *Canadian Navigable Waters Act* (CNWA), for the Alteration of the Temporary Bridge, located over Cataraqui River, at approximately 44° 14' 4.99" N x 76° 28' 27.98" W, LaSalle Causeway, Highway 2, City of Kingston, County of Frontenac, in the Province of Ontario

Please find the enclosed approval for the above-noted work issued by the Minister of Transport in accordance with subsection 7(13) of the CNWA ("Approval after activity begins or is completed").

In order to issue this approval, the Minister has considered each of the factors listed in subsection 7(7) of the Act, additional information provided by you (if applicable) and any potential adverse effects that the decision to approve the work may have on the rights of the Indigenous peoples of Canada recognized and affirmed by section 35 of the *Constitution Act, 1982*. Factors considered in the decision for approval include the following:

The Cataraqui River forms the lower section of the Rideau Canal and flows into Lake Ontario. Both recreational and commercial vessels navigate this watercourse. The western opening allows access for canoes and kayaks only. The eastern opening consists of a buoyed channel that has a vertical clearance restriction of 14 feet. The central span is where the bascule bridge was located, and the new temporary modular bridge has been installed. This modular bridge facilitates vehicular traffic but restricts navigation when in place, significantly impacting vessel movement for vessels over 14 feet.

The temporary bridge and proposed bridge removal schedule for the 2025 navigation season significantly reduces the number of waterway openings from over 700 to 23. This change, as outlined below, is expected to impact vessels navigating the waterway to the Rideau Canal, as well as those requiring access to or from the inner and outer Kingston Harbour.

In December 2024, Transport Canada (TC) posted the application for approval and supporting documents to the Common Project Registry. Concerns included the frequency of the temporary bridge removal and the limited proposed schedule for navigation through the LaSalle Causeway, impacting boating tour schedules, and access to the only local drydock located in the inner harbour. Commenters expressed that one removal of the temporary bridge per week was insufficient and requested additional openings, including full weekends, Canada Day, emergencies, and October 11, (the closing day for the Rideau Canal). Additionally, concerns were raised regarding revenue impacts experienced in 2024 and concerns for the 2025 season.

There were requests for less removals to accommodate vehicular traffic and to address concerns regarding interruption in the flow of people, goods and services and potential impacts on economies and businesses, emergency services, public transit, tourism, and special events. Suggestions included bridge removal on Sundays instead of Saturdays, to minimize disruptions to vehicle traffic and later closure times for vehicles.

In consideration of the above, the Minister has determined to issue the approval documents with conditions requiring opening once a day (generally Sunday) and on select additional openings (i.e. Canada Day and October 14th) (see Annex A below).

Canada



Transport Canada Transports Canada

Please note that the CNWA, amongst other obligations, requires the owner to immediately notify the Minister if the work causes or is likely to cause serious and imminent danger to navigation, to take reasonable measures to mitigate potential dangers and to remedy any adverse effects that result from that danger to navigation.

This approval relates only to the interference of your work with navigation under the CNWA and does not grant any rights related to the ownership of the bed of the navigable water.

Please note that it is the owner's responsibility to comply with any other applicable laws and regulations.

Should you have any questions, please do not hesitate to contact our office in Sarnia, Ontario by phone at 519-383-1863 or by e-mail at NPPONT-PPNONT@tc.gc.ca.

Respectfully,

Vera Haslett
Regional Director
Programs Branch - Ontario Region
Transport Canada

VH/eh

Attachment(s)

cc: Philip St. John, Priestly Demolition Inc

Canada



APPROVAL

OWNER: Public Services and Procurement Canada
11 Laurier Street, Portage III, Place du Portage
Gatineau, QC K1A 0S5

WORK(S): Temporary Bridge

SITE LOCATION: Located over Cataraqui River, at approximately 44° 14' 4.99" N x 76° 28' 27.98" W, LaSalle Causeway, Highway 2, City of Kingston, County of Frontenac, in the Province of Ontario

As per the application (detailed above) to the Minister of Transport, submitted pursuant to the *Canadian Navigable Waters Act*, for an approval of the work per the attached plan(s) and/or document(s), the Minister hereby approves the work pursuant to subsection 7(13) "Approval after activity begins or is completed", in accordance with the following terms and conditions:

1. The approved schedule for the temporary bridge is valid until April 1, 2026.
2. The Owner must follow the 2025 Navigation Opening Schedule detailed in Annex A.
3. The Owner may add any additional opening dates (for emergency purposes only) without further approval from Transport Canada.
4. The Owner must submit an Application for Approval for the temporary bridge placement and scheduled openings for the 2026 bridge installation period no later than October 31, 2025.
5. Advise the Canadian Coast Guard, Marine Communications and Traffic Services (MCTS) NAVWARN desk by email at navwarn.mctsprescott@innav.gc.ca or by telephone at 613-925-0666 of the bridge opening schedule to allow for appropriate Navigational Warning/Notice to Mariners action. Follow up on Navigational Warning/Notice to Mariners until the end of the schedule.
6. The Owner is authorized to keep the bridge in place should wind speeds measured at the bridge location exceed 28 km/h. The wind speeds must be monitored every hour until 12:00 PM of the same day before a full day closure can be determined.
7. The Owner must notify Transport Canada's Navigation Protection Program Ontario office by email at NPPONT-PPNONT@tc.gc.ca immediately should the bridge not be removed. The public must be notified immediately by broadcast on VHF 16 and by notifying the Canadian Coast Guard, Marine Communications and Traffic Services (MCTS) NAVWARN desk by email at navwarn.mctsprescott@innav.gc.ca or by telephone at 613-925-0666. A copy of the NAVWARN must be sent to Transport Canada's Navigation Protection Program Ontario office.
8. Should a full day closure be required due to wind speeds, when safe to proceed, the bridge must be removed the next day, allowing for the same hours of opening per Annex A and the public must be notified immediately by broadcast on VHF 16 and by notifying the Canadian Coast Guard, Marine Communications and Traffic Services (MCTS) NAVWARN desk by email at navwarn.mctsprescott@innav.gc.ca or by telephone at 613-925-0666.
9. The Owner must keep a log of all times the wind speed was greater than 28 km/h and provide that log to the Navigation Protection Program Ontario office by email at NPPONT-PPNONT@tc.gc.ca on a monthly basis.
10. At the eastern causeway opening, install and maintain a real-time draft clearance monitoring system notifying vessels of available clearance during all periods of open water. Readings shall be made available both onsite and online.



11. The Owner must monitor the number of vessels traversing through the causeway and will provide the data to Transport Canada by November 30 of every year.
12. Warning signs must be installed and maintained signs on both side of the bridge. Signs shall be black lettering on a yellow background and visible from a distance of 200 metres, stating the following:
WARNING
LIFT BRIDGE OUT OF ORDER
13. Yellow cautionary buoys with yellow retro-reflective strip must be placed and maintained around the barge, to mark the mooring lines, when it is in place adjacent to the modular bridge from April 19 to November 16 of any year. The buoys must be in compliance with the Private Buoy Regulations, under the *Canada Shipping Act, 2001*.
14. All construction equipment used in conjunction with this project shall be stored in such a manner that it does not obstruct charted Aids to Navigation and does not obstruct navigation.

SIGNED on June 2, 2025 in Toronto, Ontario

Vera Haslett
Regional Director
Programs Branch - Ontario Region
Transport Canada

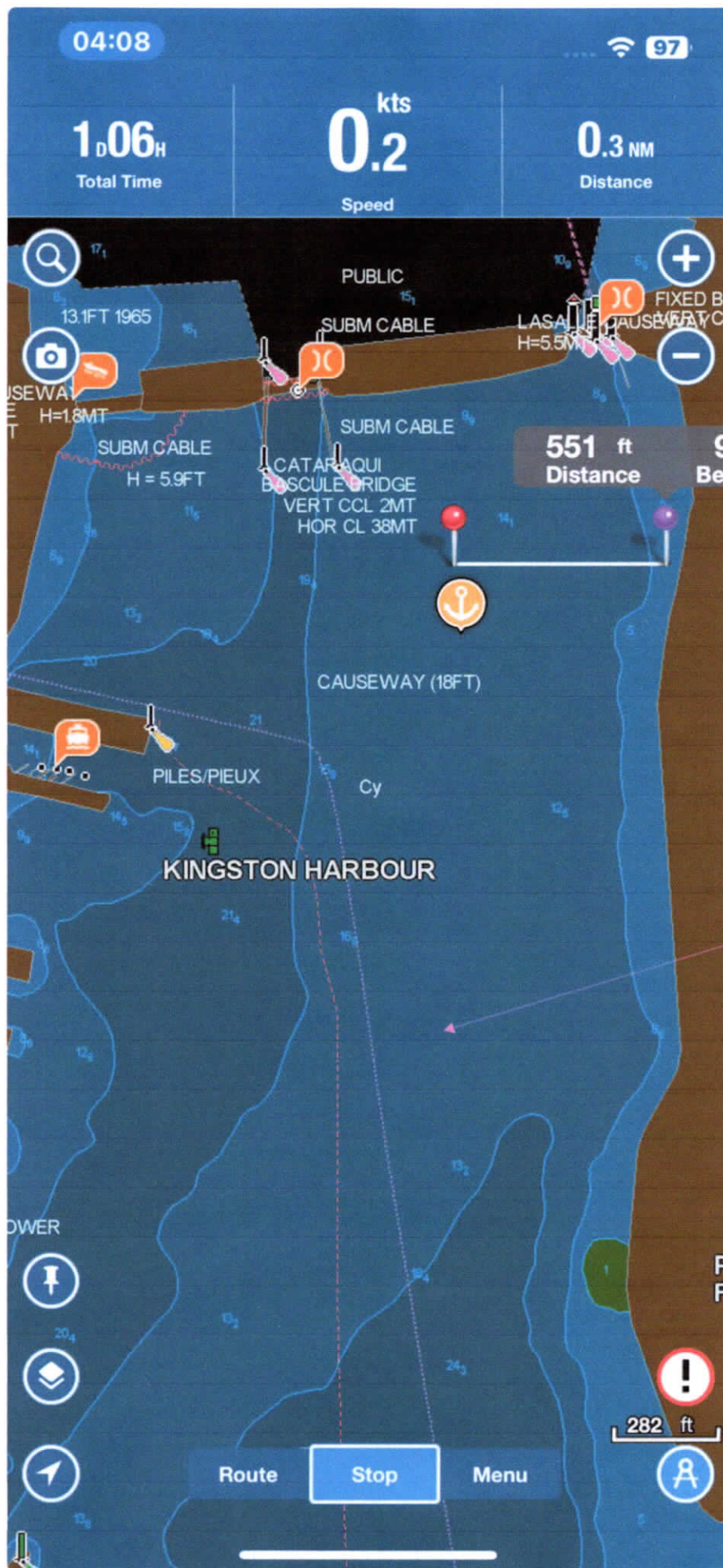
For the Minister of Transport



ANNEX A

2025 Navigation Opening Schedule

Closure No.	Date	Start of Road Closure	Start of Navigation Opening	End of Navigation Opening	End of Road Closure
1	June 8 2025	6:00am	9:00am	7:00pm	10:00pm
2	June 15 2025	6:00am	9:00am	7:00pm	10:00pm
3	June 22 2025	6:00am	9:00am	7:00pm	10:00pm
4	June 29 2025	6:00am	9:00am	7:00pm	10:00pm
5	July 1 2025	6:00am	9:00am	7:00pm	10:00pm
6	July 6 2025	6:00am	9:00am	7:00pm	10:00pm
7	July 13 2025	6:00am	9:00am	7:00pm	10:00pm
8	July 20 2025	6:00am	9:00am	7:00pm	10:00pm
9	July 27 2025	6:00am	9:00am	7:00pm	10:00pm
10	August 3 2025	6:00am	9:00am	7:00pm	10:00pm
11	August 10 2025	6:00am	9:00am	7:00pm	10:00pm
12	August 17 2025	6:00am	9:00am	7:00pm	10:00pm
13	August 24 2025	6:00am	9:00am	7:00pm	10:00pm
14	August 31 2025	6:00am	9:00am	7:00pm	10:00pm
15	September 7 2025	6:00am	9:00am	7:00pm	10:00pm
16	September 21 2025	6:00am	9:00am	5:00pm	8:00pm
17	October 5 2025	6:00am	9:00am	5:00pm	8:00pm
18	October 14 2025	6:00am	9:00am	5:00pm	8:00pm
19	October 19 2025	6:00am	9:00am	5:00pm	8:00pm
20	November 2 2025	6:00am	9:00am	5:00pm	8:00pm
21	November 16 2025	6:00am	9:00am	5:00pm	8:00pm



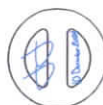
KEY PLAN

GENERAL NOTES

- INSTALLATION OF A NEW PREFABRICATED MODULAR BRIDGE WAS COMPLETED AFTER FULL REMOVAL OF THE ORIGINAL BAROCLE BRIDGE. THE BRIDGE WAS MAINTAINED TO SERVE AS THE ORIGINAL FOUNDATIONS FOR THE NEW PREFABRICATED MODULAR BRIDGE.
- THE EXISTING CONCRETE ADJUSTMENTS AND GABRIEL WALLS HAVE BEEN MAINTAINED TO PROVIDE THE SAME STABILITY FOR THE NEW PREFABRICATED MODULAR BRIDGE.
- ALL EXISTING UTILITIES SHALL BE PROTECTED AND MAINTAINED THROUGHOUT ALL REMOVALS AND REINSTALLMENTS OF THE PREFABRICATED MODULAR BRIDGE.
- THE NEW PREFABRICATED MODULAR BRIDGE HAS BEEN DESIGNED IN ACCORDANCE WITH THE BRIDGE DESIGN SPECIFICATIONS FOR TRAFFIC. DESIGN VEHICLE - 4-25-TON TRUCK OR LANE LOAD.
- THE PREFABRICATED MODULAR BRIDGE WILL BE IMMEDIATELY SHAVED WITH THE BRIDGE TO OPEN THE FULL NAVIGATION CHANNEL FOR THE PASSAGE OF VESSELS AND BOATS AFTER A DESIGNATED PERIOD.
- THE BRIDGE WILL BE MOORED IN THE CHANNEL AS SHOWN ON THIS DRAWING. THE BRIDGE SHALL BE MAINTAINED AND REINVESTMENT DRAWINGS WILL BE SUBMITTED FOR THE MODULAR BRIDGE.

DRAWING LIST

101 GENERAL ARRANGEMENT I
102 GENERAL ARRANGEMENT II



MARK	DATE	REVISIONS	REV
1	10/01/2024	ISSUED FOR PERMIT REVIEW	11
0	24/11/2024	ISSUED FOR PERMIT REVIEW	11

ENTUITIVE
200 University Avenue, 7th Floor
Toronto, ON M5H 3C5 Canada
+1 416.477.5812

PPM
PRIESTLEY
DEMOLITION INC.

Priestley Demolition Inc.
3200 Lloydtown-Aurora Rd., King City,
ON L7B 0G3 Canada
+1.905.841.3735

SUBJECT
LASALLE CAUSEWAY BRIDGE
TEMPORARY REPLACEMENT

GENERAL ARRANGEMENT I

	STATUS	DATE RECEIVED & FOR WHAT PURPOSE

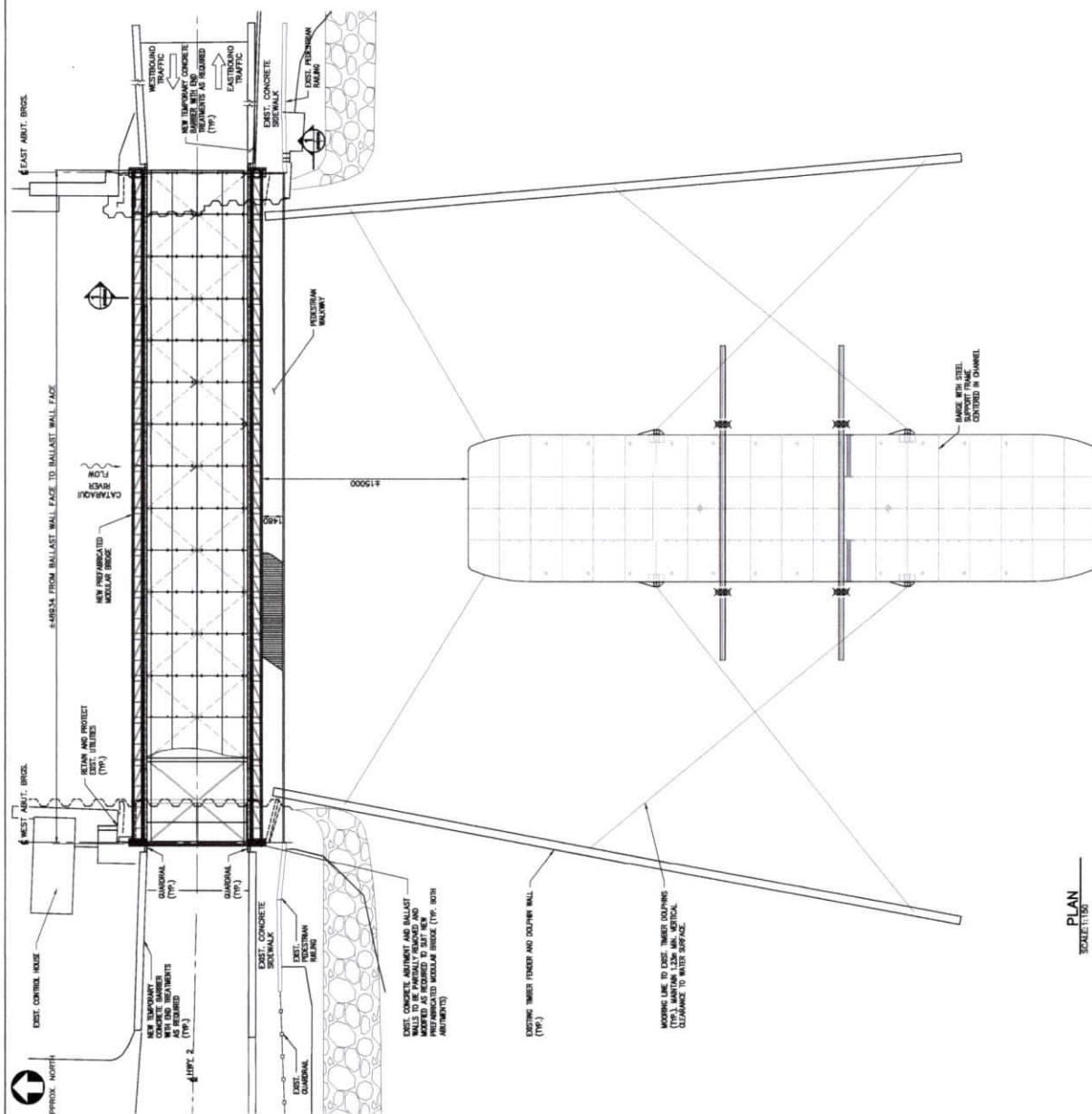
SECTION	SCALE	DRAWING No.
	AS INDICATED	

DATE	18 JUL 2024
PROJECT	

1000

S101

PLAN
SCALE: 1" = 150'



APPROX. NORTH




ENTUITIVE

Priestly Demolition Inc.
3200 Lloydtown-Aurora Rd., King City,
ON L7B 0G3 Canada
+1 905 841 3735

STATUS		FOR PERMIT REVIEW		DRAWING No.	
DESIGN	SCALE	AS INDICATED		S102	
CRACK	DATE	18 JUL 2024			
CHECKED	AM	PROJECT			
		No.		ENR24-01365	

02 JUNE 2025